

Sports hall luminaires - White louvre - direct wide distribution

Sheet steel housing with uniformly wide all-round edge and 7 mm raised edges for concealed symmetrical rail constructions and cut-out ceilings; Housing colour traffic white RAL 9016; Light distribution direct wide distribution by means of White louvre of sheet steel, With stable, smooth cross blades; painted white similar to RAL 9016; with V reflector, can be folded down on one side; ball-proof. Louvre fastening is via spring-loaded ball-proof catches that can only be opened with tools, UGR (4H/8H) 19.5. Electrical connection via 5-pole connection terminal with plug-in contacts.; With changeover converter for emergency lighting operation on request. Wiring in two-group switching, grouping of the LED units 1x inside / 2x outside;. Mounting bracket BBT for concealed symmetrical rail constructions or recessed ceiling, order separately.

## CHARACTERISTICS

Order number	78130036200
EAN number	4020863332533
Commodity code	94051190
Certification mark	IP 20, Protection class I, F, Protection against tennis ball impact, Protection against ball impact, Indoor, CE
Impact resistance (IK rating)	IK03
Ambient temperatur	ta 25°C
Special properties	Ready for IoT
Warranty period	5 years
State funding programs	BEG - Federal funding for efficient buildings (valid only for Germany)

## ELECTRICAL ENGINEERING

Controller	Electronic driver DALI2 (2 pcs.)
System output	114W
Mains voltage	230V/50Hz
Circuit breakers (inrush current)	12 pieces/B10, 20 pieces/B16, 21 pieces/C10, 34 pieces/C16
Energy efficiency class/light source	B

## LIGHTING TECHNOLOGY

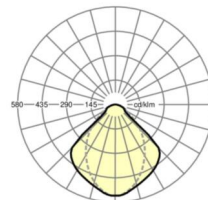
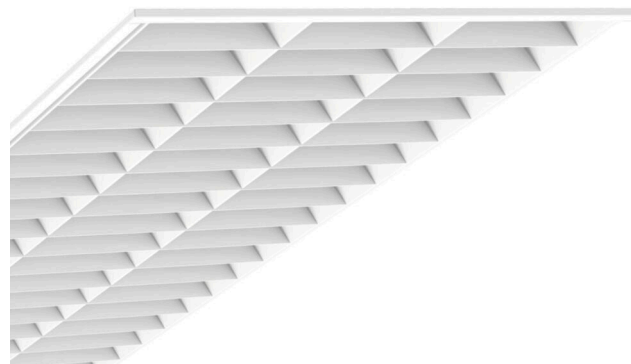
Placement	LED, Colour rendering/Light colour CRI ≥ 80 / 4000K
Colour tolerance (MacAdam)	3SDCM
Photobiological safety (Luminaire)	RG1
Nominal luminous flux	14579lm
LED service life	50000h L80/B10 (Tq 25°C)
Luminaire luminous efficiency	128lm/W
Beam angle	(C0) / 75° (C90)
UGR lat./long.	19.2 / 19.5

## MECHANICS

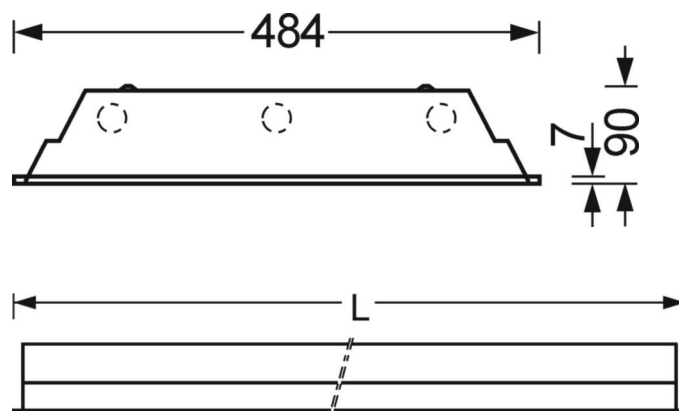
Housing colour	traffic white RAL 9016
Dimensions (LxWxD)	1548mm x 484mm x 90mm
Depth	83mm
Ceiling system	concealed symmetrical rail construction [VS], cut-out ceilings [AD]
Ceiling cut-out (LxW/D)	1535mm x 470mm
Installation depth	250mm [AD]; 250mm [VS]
Weight (net)	19.1kg
Type of installation	Ceiling installation individual mounting

## DEEP-LINK

<https://www.regiolux.de/en/article/78130036200>



Reference	LED 14600lm 840
ηLB	100 %
Φ ↓/↑	100 % / 0 %
UGR lat./long.	19.2 / 19.5



## Dimensions

---

<b>L</b>	1548 mm	Length
<b>B</b>	484 mm	Width
<b>H</b>	90 mm	Height
<b>T</b>	83 mm	Depth
<b>DA(L)</b>	1535 mm	Cutting dimension length
<b>DA(B)</b>	470 mm	Cutting dimension width
<b>Et(AD)</b>	250 mm	Ceiling distance minimum (cut-out ceiling)
<b>Et(VS)</b>	250 mm	Ceiling distance minimum (concealed symmetrical)
<b>MLVS</b>	1550 mm	Module dimension length (concealed symmetrical)
<b>MBVS</b>	484.5 mm	Module dimension width (concealed symmetrical)

---